

NOW ASHLEE'S FEATURES ARE JUST LIKE JESSICA'S!



NOSE

When asked in a June 26 E! interview whether she'd had a nose job, Ashlee responded, "Maybe I did, maybe I didn't." She's acting coy about her new sniffer, but according to NYC plastic surgeon Dr. Geoffrey

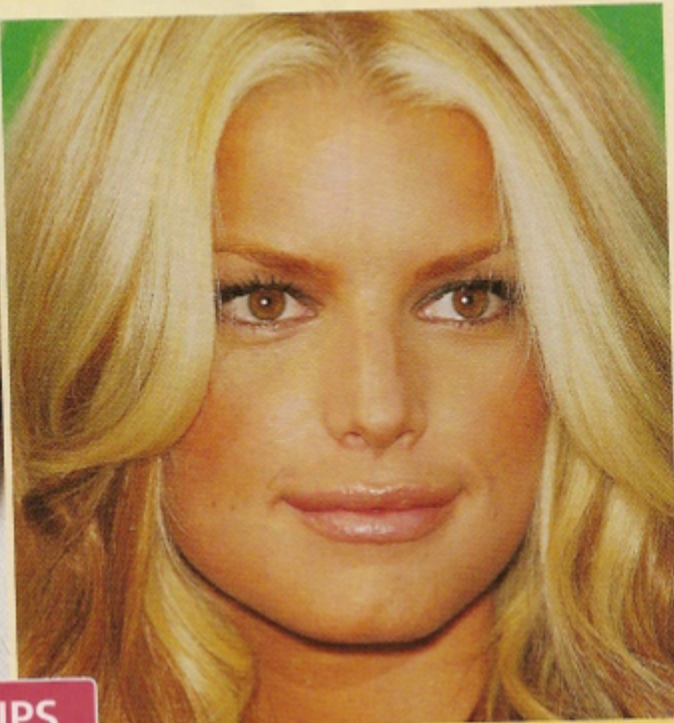


Tobias, the difference seems undeniable. "It looks like the bump on her nose was removed and the tip was refined," he says of the \$10,000 procedure, which made the Ashlee-Jessica similarity uncanny.



LIPS

"It looks like Ashlee's lips have been plumped up with an injectable like Restylane," says Michigan-based plastic surgeon Dr. Anthony Youn. Dr. Youn notes that the borders of Ashlee's lips look enhanced,



just like Jessica's — which is no surprise, considering it's highly likely that Jess has had some lip injections of her own. The Restylane filler runs \$700 a pop, but hey — maybe they're getting a family discount!